

The background of the slide is a stylized American flag. The top half is a solid blue field with white stars, and the bottom half is a white field with red stripes. The stars and stripes are slightly blurred and have a soft glow.

Redistricting – 2021 Further Updates & Initial Plan Unveilings

**By Kimball Brace
Election Data Services, Inc.
December 9, 2021**

Today's Discussion

Prisoner Gerrymandering Issue

1. Update on ACI data
2. Plan Drawing Process
 - Explanation of Concepts
 - Explanation of Ripple Effect
 - Where Maps can be seen
 - www.riredistricting.org
3. Moving Forward

Update on Prisoner/ACI information

Received updated file with new address information for where prisoners went to after release

Parolee Address Study					
	All Listed			Geocoded Inmates	
Record matched, Different Address	151	74%		125	74%
Record matched, Same Address	52	26%		44	26%
Matched to Inmate Record	203			169	
Not in ACI on Census Day	280				
Total on Active Parole	483				

Years before Good Time Release

	All Inmates		Geocoded Inmates	
Not Yet Sentenced	630	24%	398	21%
Under 1	626	24%	487	25%
1 to 2	396	15%	324	17%
3 to 5	265	10%	226	12%
6 to 9	172	7%	131	7%
10 or Over	244	9%	183	9%
Never	270	10%	178	9%
Undetermined	15	1%		
TOTAL	2618		1927	

Map Drawing Concepts

- Northern/Southern Starting Points
- Minority seats
- Township Boundaries and Geographical Features
- Communities of Interest

Ripple Effect

Plans are NOT final

- Designed to get feedback

Release 4 Draft Maps

Different Variations

- State Senate Plan A
- State Senate Plan B
- State House Plan A
- State House Plan B

Announcing Tonight

- State Senate Plan C

**Maps on Large Plots Here
But also on website for viewing in detail**

www.riredistricting.org

**Link there to go to My Districting
system for each plan**

Includes racial information

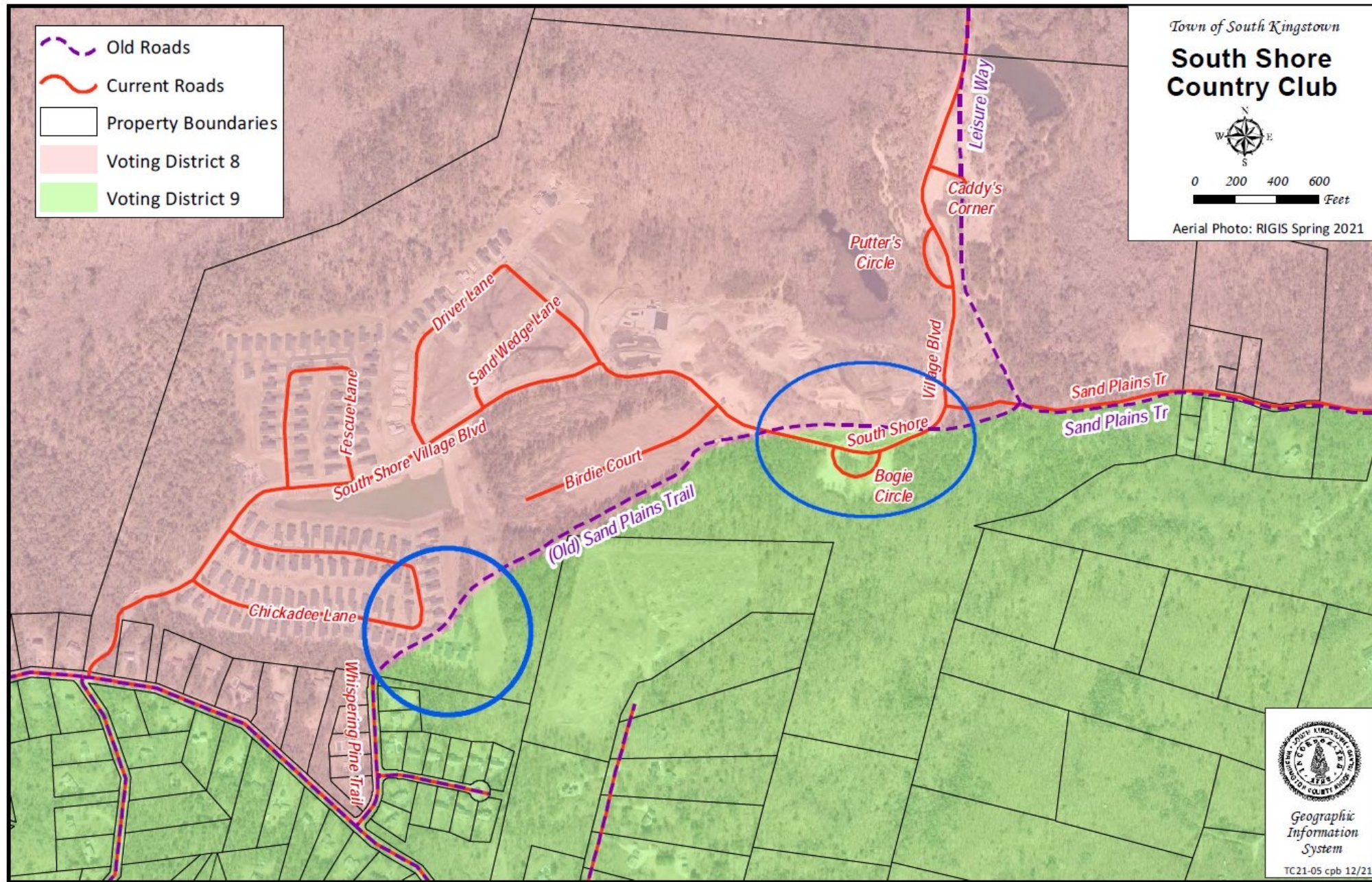
Comparison Tables – “A vs B”

- **Districts vs Towns & Cities**
- **New Districts vs Old Districts**

Moving Forward

- **Improvements to files and public data**
 - Existing District lines and Municipal Boundaries
 - Comparison Reports (What's A, What's B?)
- **Upcoming Drafts for House, Senate, & Congressional Lines**
 - House "C" and Senate lines can incorporate feedback we've received
 - Please take advantage of District and Communities of Interest Tool from MyDistricting

Getting Reactions from Towns



Thank you



**Kimball Brace
President**

Election Data Services, Inc.

6171 Emerywood Court

Manassas, VA 20112

(703-580-7267 or 202-789-2004)

**KBrace@electiondataservices.com or
KBrace@aol.com**

www.electiondataservices.com